

 **FOR EXPORT ONLY**

The Advancement of **NEW**
Laser Technology



VIKINI

Fastest, Virtually Painless
Hair Removal Laser

VIKINI

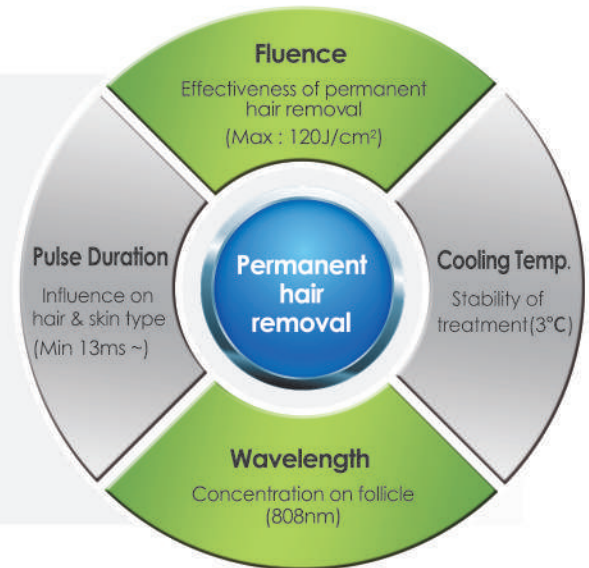
Fastest, Virtually Painless Hair Removal Laser



VIKINI is based on high powered 808nm diode laser that is far more stable and uniform than other laser wavelengths for permanent hair removal. Its fast operation up to 10Hz and various selective pulse modes can provide less pain and more effective result.



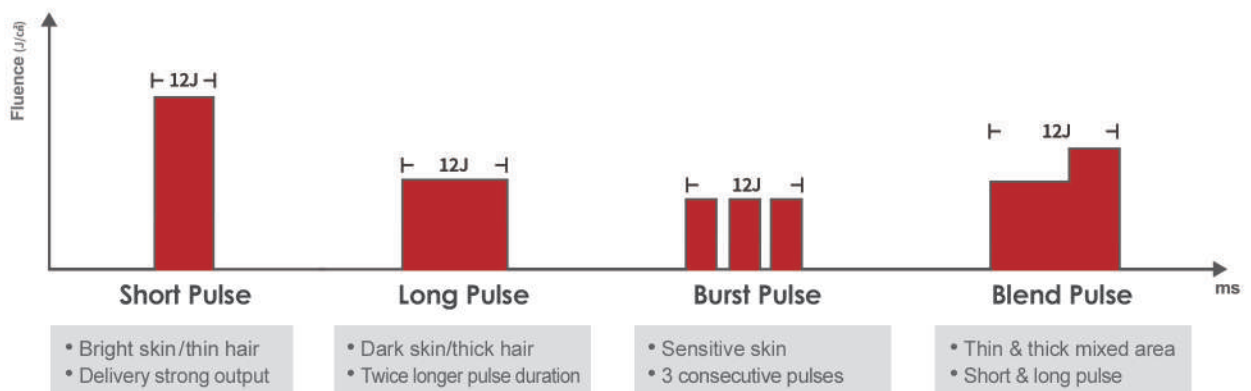
- **12x11mm** Spot
- Up to **10Hz** Repetition Rate
- **Stable & Uniform** Beam Quality
- **Powerful** Contact Cooling



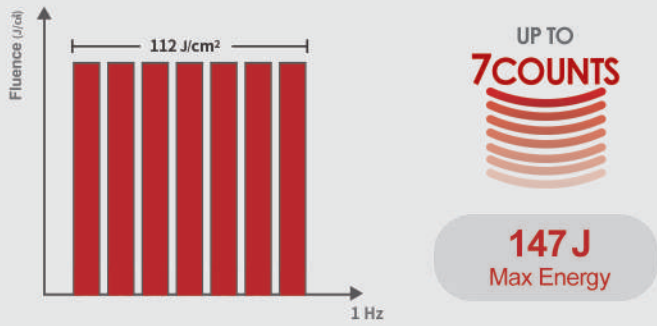
VARIOUS LASER PULSE MODES

VIKINI is equipped with 3 laser pulse modes of FDP, DP1 and DP2 that allow the practitioner to change the laser pulse modes from continue to short, long, combined pulses or multi-pulse according to patient's skin and hair type. Such various laser pulse modes can treat all skin and hair types with high power and less pain for effective result.

DP1 Mode | 4 Laser Pulse

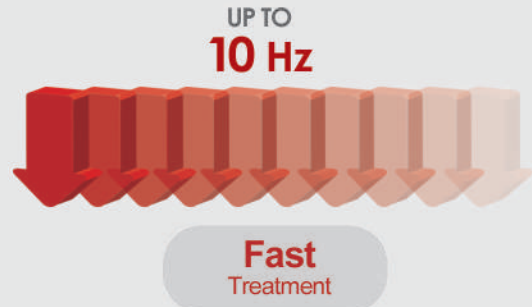


DP2 Mode | Intensive Multi-pulse Technique



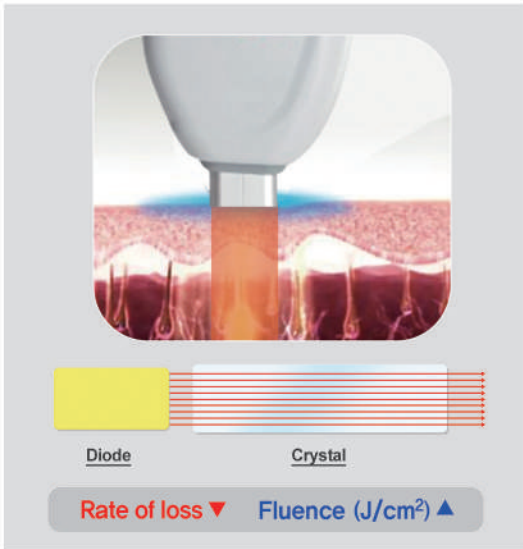
Intensive hair removal for fine hair

FDP Mode | Quick Motion Technique



Fastest hair removal for large areas
7mins for a full back | 2mins for armpit

TECHNOLOGY HIGHLIGHT

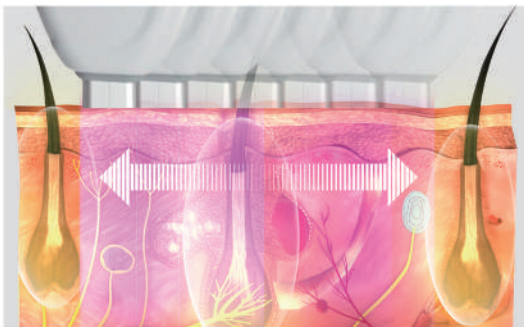


Safe and Effective

Its collimation optic is highly accurate in uniformly radiating laser wavelengths, resulting in more effective treatments through decreasing loss and scattering of laser light.

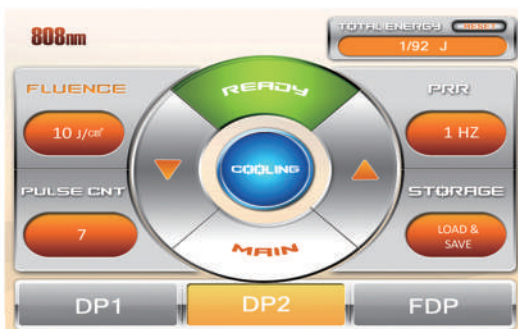
Virtually Painless

VIKINI has the powerful sapphire tip contact cooling system in order to minimize the thermal damage and make the treatment comfortable.



Ultrafast Speed

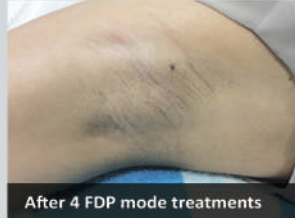
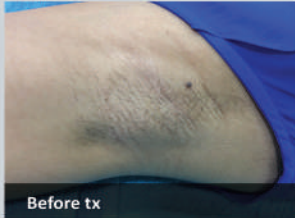
Its fast operation up to 10Hz with continuous pulse mode can treat a full back in less than seven minutes with safe and ultrafast speed.



Various Applications

Various laser pulse modes in a system offer safe and effective operation way to treat any type of hair and skin with less pain and much faster speed than any other lasers.

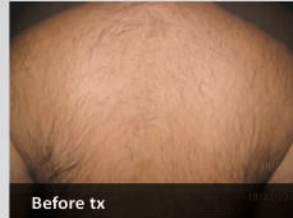
Clinical Evaluation



I use VIKINI 's FDP mode, basically making the treatment virtually painless and extremely well tolerated, even in more sensitive areas including the face, chin, knees and bikini lines.

Punit Saragogi, M.D., M.B.B.S.,F.C.P.S

Skin & Hair Clinic Mumbai, India



The VIKINI has been a great addition to my practice because it is extremely effective clients notice the difference even with one treatment and refer other patients for laser hair removal.

Adrian Lim, M.B.B.S., F.A.C.P., F.A.C.D.

Royal North Shore Hospital Republic Cosmetic Dermatology and Vein, Australia

SPECIFICATION

Wavelength	808nm
Laser Type	CW Laser Diode
Laser Power	Max 600W
Energy Output	Up to 120 J/cm ²
Spot Size	12 * 11 mm
Pulse Duration	Up to 625ms
Pulse Repetition Rate	FDP : 5 ~10Hz / DP1: 1~3Hz / DP2 : 1~3Hz
Cooling	Sapphire Tip Cooling (3°C)
Optical Guide	Sapphire Crystal
Electrical Power	100~230VAC, 50/60Hz, 2.1KVA

ILOODA-C-0007-Ver.E02



sales@ilooda.com www.ilooda.com

120, Jangan-ro 458beon-gil, Jangan-gu, Suwon-si, Gyeonggi-do, 16200 Korea [t] +82 31 278 4660 [f] +82 31 278 4661

© 2017, ILOODA Co., Ltd. All rights reserved.